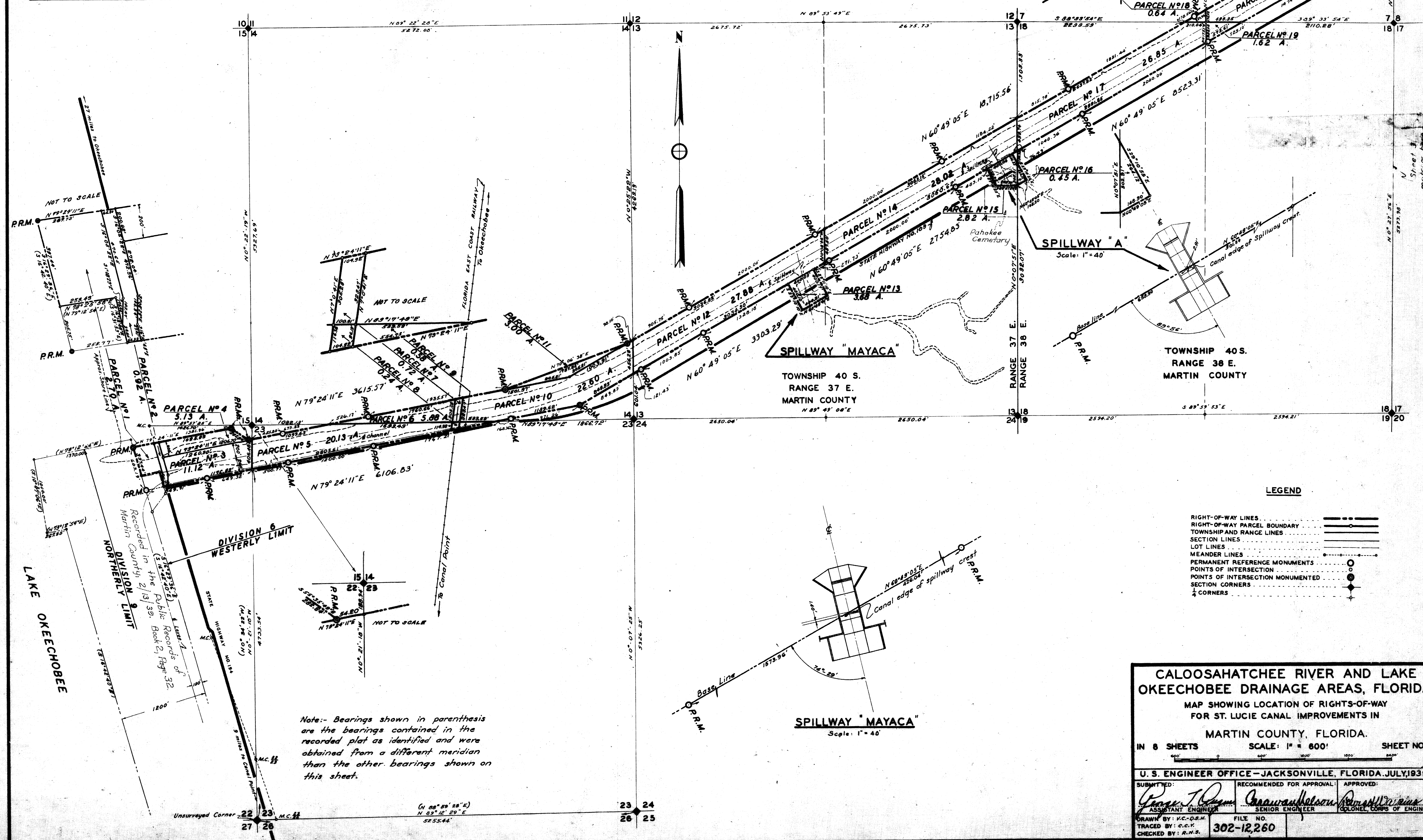


Sheet 2 of File No 18375 of 2-35

PARCEL	DIVISION	SECTION	TOWNSHIP	RANGE	ACREAGE	D.O. INDEX N°	DATE	METHOD	PRICE PAID	PARTY OR PARTIES FROM WHOM ACQUIRED
1	6	22	40 S	37 E	2.70	3501				
2	6	22	40 S	37 E	0.92	3502				
3	6	22	40 S	37 E	11.12	3503				
4	6	22	40 S	37 E	5.13	3504				
5	6	23	40 S	37 E	20.13	3505				
6	6	14	40 S	37 E	5.80	3506				
7	6	14	40 S	37 E	0.72	3507				
8	6	23	40 S	37 E	0.24	3508				
9	6	23	40 S	37 E	1.29	3509				
10	6	14	40 S	37 E	22.50	3510				
11	6	14	40 S	37 E	3.00	3511				
12	6	13	40 S	37 E	27.00	3512				
13	6	13	40 S	37 E	3.68	3513				
14	6	3	40 S	37 E	28.02	3514				
15	6	18	40 S	37 E	2.82	3515				
16	6	18	40 S	38 E	0.45	3516				
17	6	18	40 S	38 E	26.85	3517				
18	6	7	40 S	38 E	0.64	3518				
19	6	10	40 S	38 E	1.62	3519				
20	6	7	40 S	38 E	25.79	3520				



CALOOSAHATCHEE RIVER AND LAKE OKEECHOBEE DRAINAGE AREAS, FLORIDA.
 MAP SHOWING LOCATION OF RIGHTS-OF-WAY FOR ST. LUCIE CANAL IMPROVEMENTS IN MARTIN COUNTY, FLORIDA.
 IN 8 SHEETS SCALE: 1" = 600' SHEET NO. 2
 U. S. ENGINEER OFFICE - JACKSONVILLE, FLORIDA, JULY, 1939.

SUBMITTED:	RECOMMENDED FOR APPROVAL:	APPROVED:
<i>George J. Quinn</i> ASSISTANT ENGINEER	<i>Arvau Nelson</i> SENIOR ENGINEER	<i>Robert W. Davis</i> COLONEL, CORPS OF ENGINEERS
DRAWN BY: V.C.-D.S.N.	FILE NO. 302-12,260	
TRACED BY: C.C.K.		
CHECKED BY: R.N.S.		